

Chapter Seven

ROW SEVENTEEN

NORTH SAYS CORNER ROW (Palmer) Say's Row (Johnson)



Say was a prominent trader at the west end of this row, in a many windowed shop. Norwich has its "Say's Court" in Barrack Street. (recorded in Johnson's notes)

Charles Palmer tells us that Row number seventeen, from North Quay to George Street, was called North Says Corner Row. The dwelling house at the north-west corner fronting the Quay was an old house faced with white brick, which in the seventeenth century was the residence of Brightin Wakeman Esq. This house at the end of the eighteenth century and beginning of the nineteenth was the property and residence of Thomas Girdlestone Esq., an eminent Physician who had been born at Holt, Norfolk in 1758. After passing some years with the army in India he settled in Yarmouth, where he succeeded Dr. Aikin, and practised with great success for thirty seven years. Dr. Girdlestone was tall, slender and upright, scrupulously dressed in black with silk stockings and half gaiters, a white cravat, an ample shirt frill, powdered head and pigtail. He could be seen walking through the town with his gold-headed cane. He was the author of several medical works, and contributed to the professional journals. In 1805 he published an address to the inhabitants strongly urging the advantages of vaccination, and rebutting all the arguments then brought against it.

Dr. Girdlestone died suddenly in 1822 from an aneurysm of the heart. He was walking on the Quay and staggered and fell. He was taken into the nearest house, number two, but was found to be dead.

The Occupants, Row Seventeen

In 1886 and later, there were no occupants, as the brewery was here.

Maps of Row 17 are with Row 18 (pages 188, 189, 190).

Photo. George Street, 15.7.2006.



Row Eighteen - South Say's Row *(Palmer)*

Row number Eighteen from Say's Corner to George Street was called South Say's Corner Row. This row and Row Seventeen, can be seen in the photograph of Say's Corner. A large house in Row Eighteen had in Palmer's time been divided up, but this is not apparent in the photograph.



Row 18, a very short Row to George Street.

We can see that the houses here are all quite small with only two storeys, but many had attic rooms in the roof with dormer windows. Tall chimneys higgledy-piggledy all over the place and Georgian windows with slender glazing bars are apparent in all the houses.

Two houses on the south side of Row Eighteen had external wooden shutters as do the two houses facing down towards us in the centre of the open space. This was very much a residential area in the 18th. and 19th. centuries, although the south side of row 18 had innumerable small dwellings along it by 1906, and it had been widened to form Brewery Street. The widening all came from the north side by demolishing the houses along the centre where Say's corner was and the area between the south side of Row 18 and The Conge was unaltered.



A substantial number of the dwellings in this area were only approached by narrow passages and did not front onto any row at all. The houses here certainly were in the main very small indeed and undoubtedly would have been totally devoid of any modern conveniences.

The Occupants, Row Eighteen

In 1886 and later, there were no occupants, as the brewery was here.



Parked in Row 18!



Pavement is the site of Row 18 (looking east).

The Rows
Seventeen
to Twenty
Seven

Rows 17 and 18 (1758)

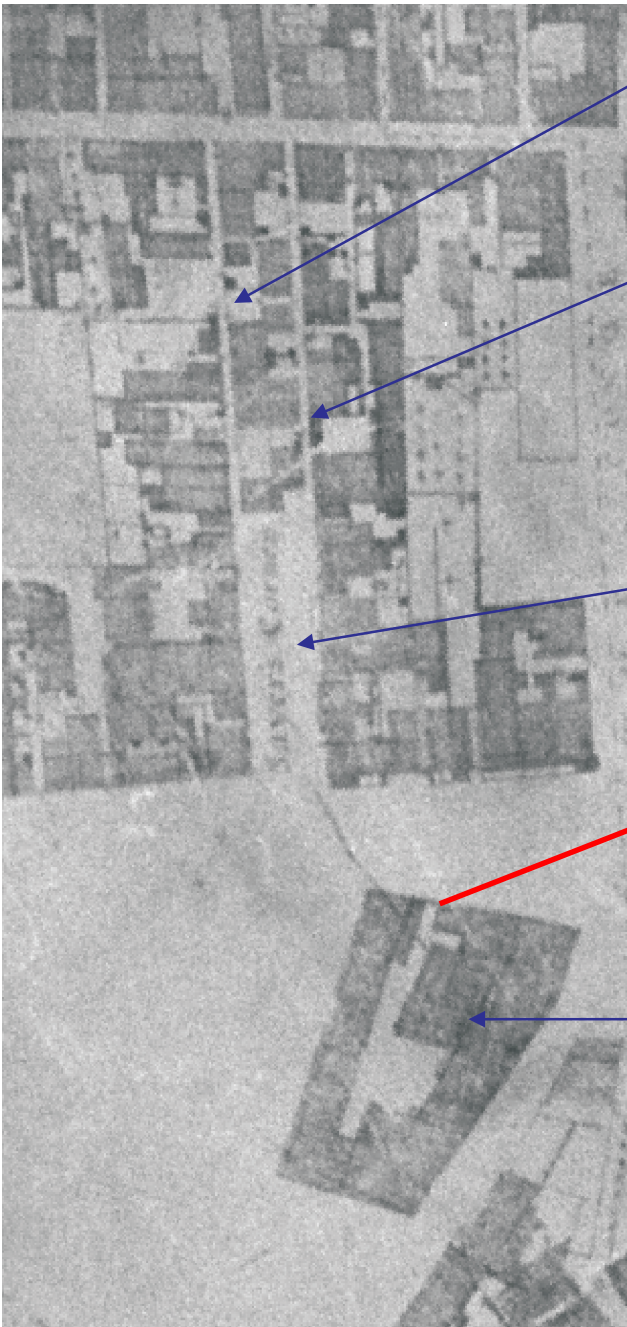
Row 17

Row 18



Pavement is the site of Row 18 (looking west).

Sayer's Corner and the Paget's Brewery on North Quay (1738)



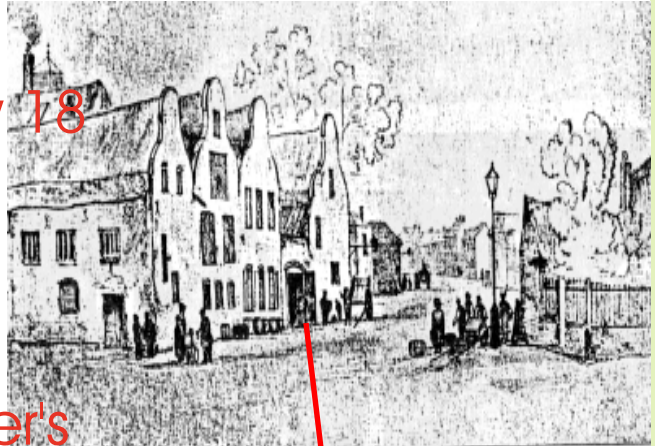
Row 17

Row 18

Sayer's
Corner

The Old
Brewery

Sam Paget's old
brewery, picture along
the line shown
(right to left)



Aldi store, 15,1,06

Below left, Aldi Store, 25.1.06, below right,
Lacon's Brewery store, 1987.



Line of Row
17 18

The Rows

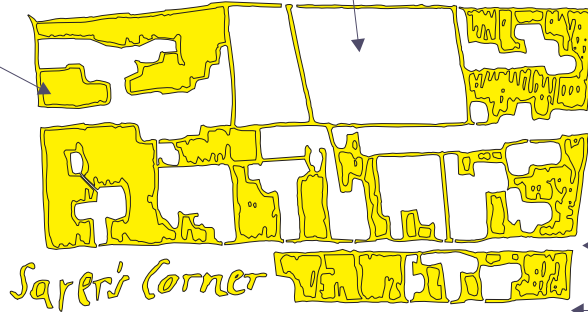
Seventeen to Twenty Seven

ROW 17

the residence of the famous botanist, Lily Wigg

the "Green yard"

1758



Row 13

two old "lost" rows

Row 17

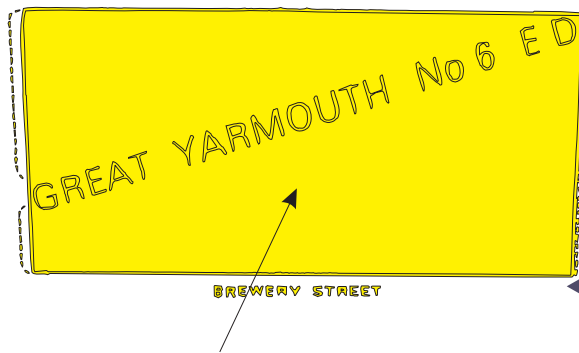
Row 18

North Quay



1906

George Street



Row 13

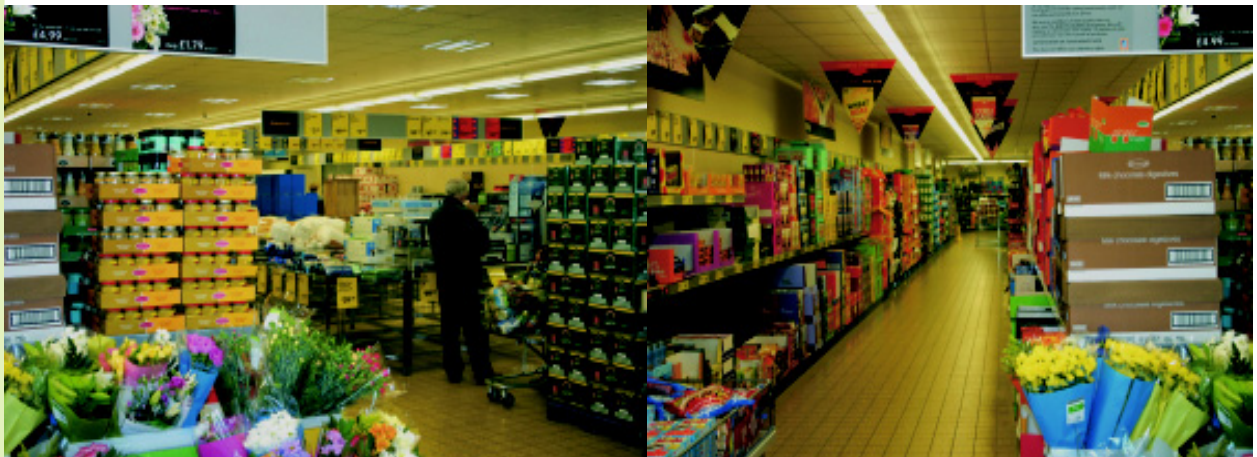
1985

Row 17

Row 18

Now the site of "Aldi" store

Below, inside Aldi Store, 25.1.06



ROW NINETEEN - WRESTLER'S ROW (Palmer)

(Not mentioned in Johnson's Notebook)



28.12.2006

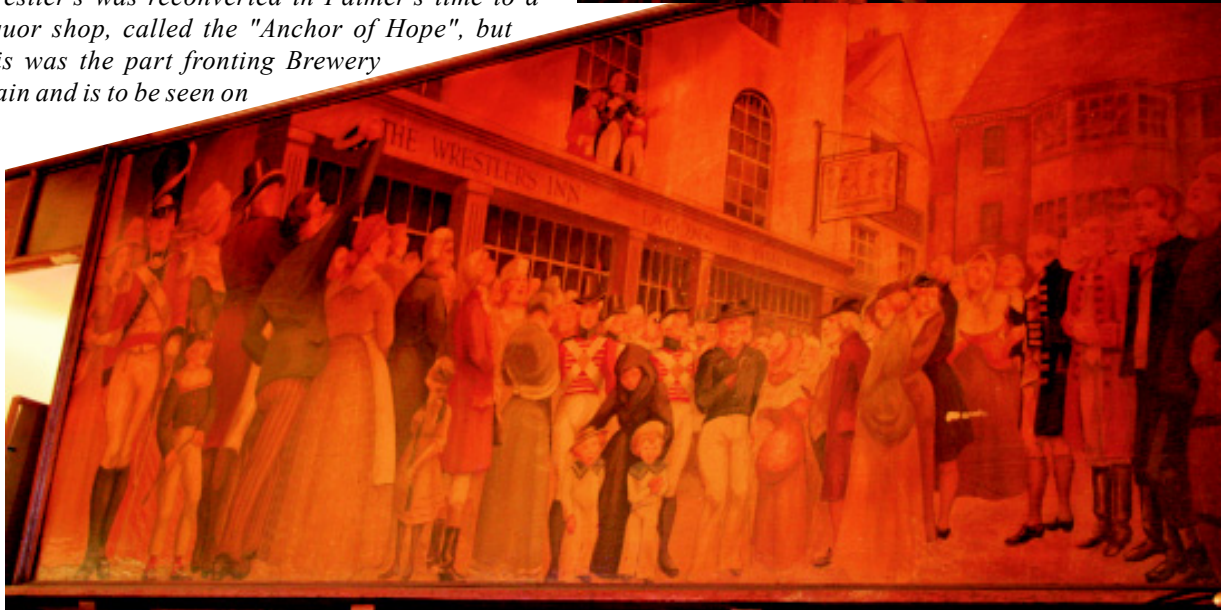
Row no. nineteen from George Street to Church Plain was called Wrestler's Row, because it led directly to the ancient Wrestler's Inn. Early in the seventeenth century this house was called "Thirkell's", but as far back as 1691 it was known as the Wrestler's and then extended westwards as far as Middle Street. (as it was originally called, later to be Charlotte Street, now Howard Street. *This being so, the Wrestler's must have been included within the space between rows nineteen and twenty One, which was in 1906 part of the brewery, and in 1989 the Tesco's Supermarket Store. If the eastward part of this space on Swinden's map is indeed Thirkell's or the Wrestler's, then it appears to be a dormy house or annexe, with a garden behind it on the west side. The further west end of the area between these two rows seems to be taken up with a rabbit warren of very small dwellings. The premises of the Wrestlers had previously belonged to Daniel Tills and John Albert Hendrick, subsequently to Joseph Partridge, Robert Newman and Samuel Meadow. Part of the Wrestler's was reconverted in Palmer's time to a liquor shop, called the "Anchor of Hope", but this was the part fronting Brewery plain and is to be seen on*

the photograph. There was also a spirit store in the brewery facing onto brewery plain, but this of course was not a retail outlet. The 1943 photo also shows the offices of the brewery, which by then look quite different to the 1700 or 1894 frontage, which we are privileged to be able to view. Whether the "Anchor of Hope" was Yerrell's or Woodcock's warehouse I do not know.

The Occupants, Row Nineteen

In 1886 and later, there were no occupants, as the brewery was here.

In the Row Survey of 1936 it says- "Rows 16, 17, 18, 19, do not exist, having been absorbed into Lacon's Brewery Business".



Paintings inside the Wrestlers Inn, 28.12.2006. GO TO NEXT PAGE